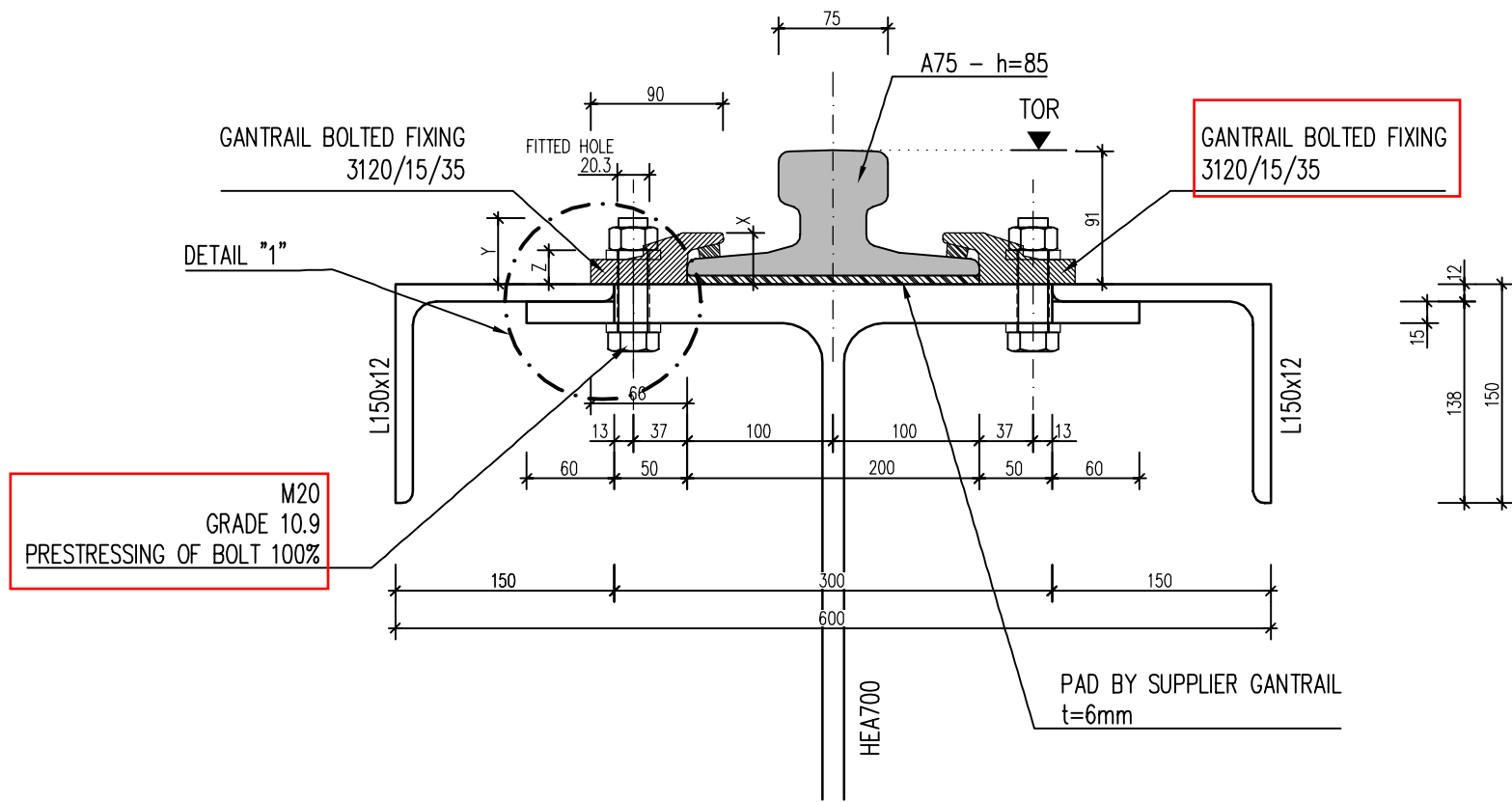


DETAIL RAIL FIXING

SCALE 1:5

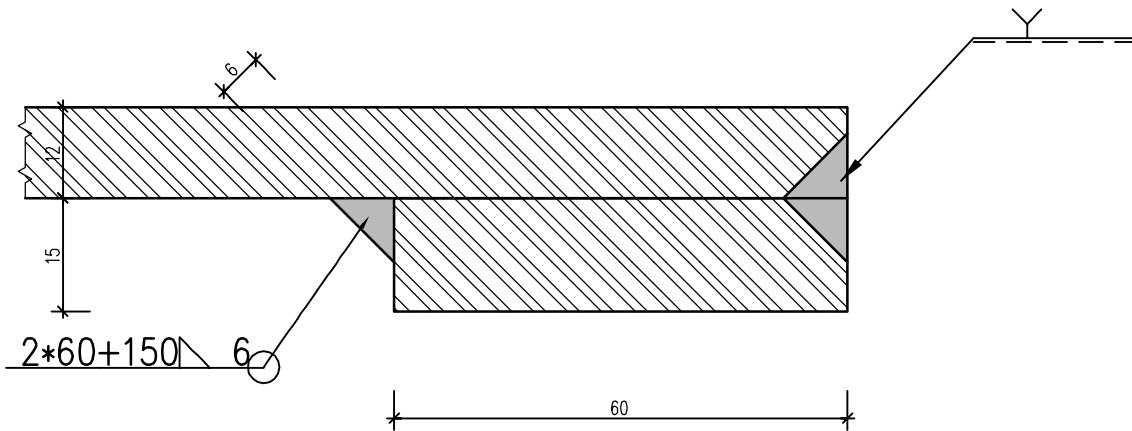
TOR = TOP OF RAIL



DETAIL "1"

STEP 1

PLATE 120*60*15 WELDED ON L150*12 WITH FILLET WELD $a=6mm$ + SINGLE BEVEL WELD WITH WELD PREPARATIONS



STEP 2

JOINT PREPARATION HEA 700 FOR DOUBLE-BEVEL GROOVE WELD

EXISTING T1 = 27 ±...
 EXISTING T2 = 12 ±...
 EXISTING T3 = T1-T2 = 15 ±...
 TO BE VERIFIED BEFORE
 FABRICATION!
 ±... ACC. TO EN 10034

