

# Transient and lightning protection systems

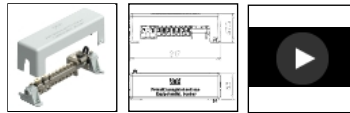
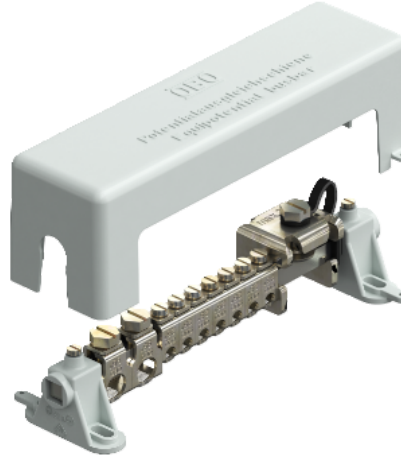
## Equipotential bonding rail for indoors, VDE-tested

Equipotential busbar for equipotential bonding according to DIN VDE 0100-410 / -540 and lightning protection equipotential bonding according to DIN VDE 0185-305

- According to VDE 0618, part 1
- With clamping rail 10 x 10 mm, nickel-plated brass
- With close-contact series terminals made of electrogalvanised steel
- Cover hood and rail stand made of grey polystyrene
- Lightning current carrying capacity 100 kA (10/350)
- Tension clamp with screw lock against self-loosening (e.g. required in industry and in explosion-protected areas)

Connection options:

- 7 single or multi-wire cables 2.5-25 mm<sup>2</sup> or fine-wire cables to 16 mm<sup>2</sup> (max. Ø 7 mm)
- 2 single or multi-wire cables 25-95 mm<sup>2</sup> or fine-wire cables to 70 mm<sup>2</sup> (max. Ø 13.5 mm)
- 1 flat conductor 30 x 3.5 mm



**Type**      Colour  
  
 1801 VDE | Grey  
  
 CuZn Brass

Pack. pcs	Weight kg/100 pcs.	Item No.	Shopping list
1	55,000	5015 65 0	

### Technical information

- [Invitations to tender](#)
- [Declaration of conformity](#)
- [Technical documents](#)
- [3D product data](#)
- [Certificates](#)

1801 VDE

### Additional information

#### Catalogue



Transient and lightning protection systems

33,4 MB, PDF

German

#### Brochure



Lightning and surge protection for maximum safety

8 MB, PDF

German