

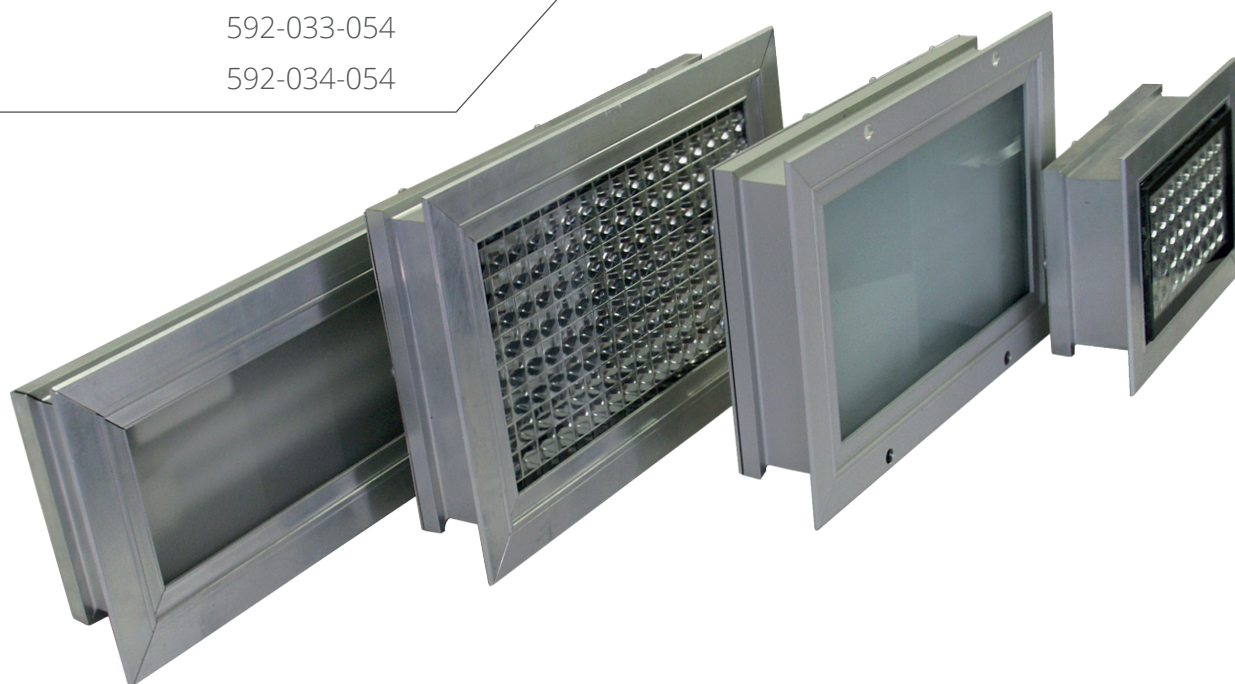
## Candolux

System of protection	IP67 (in wet area)
Series	Built-in lamp
Cover plate	ESG
Power	36 W / 2 x 36 W
Voltage	230 V / 24 V
Luminous	2800 / 5800 Lumen

Item nos.	592-015-001
	592-027-054
	592-033-054
	592-034-054

### CHARACTERISTICS

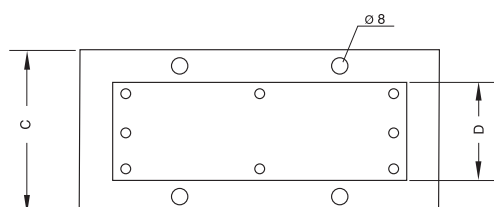
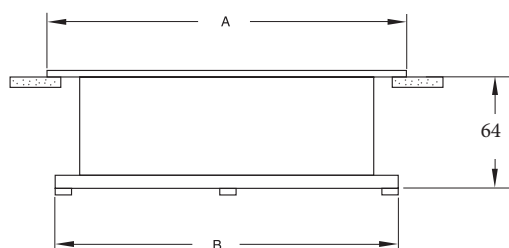
- Machine lamp
- Workplace lamp
- Water proof lamp
- Built in machine lamp



TYPE	COVER PLATE	ITEM NO.	POWER	LUMINOUS / LUMEN	BALLAST / VOLTAGE
Candolux CE / 236 TC-F	ESG	592-015-001	36 W	2800	230 V / 50-60 Hz EVG built-in
Candolux AX / 236 TC-L	ESG	592-027-054	36 W	2800	230 V / 50-60 Hz EVG built-in
Candolux / 033054	ESG	592-033-054	36 W	2800	EVG 24 V / DC built-in
Candolux AX / 272 TC-L	ESG	592-034-054	2 x 36 W	5800	230 V / 50-60 Hz EVG built-in

**Our Candolux-lamps are available in different versions. More information available on request!**

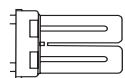
## DRAWING



### DIMENSIONS / MM

		A	B	C	D
TC-F	36 W	289	263	188	162
TC-L / 100	36 W	491	457	138	100
TC-L / 200	2 x 36 W	514	484	210	140

## SPARE PARTS



replacement lamp 36 W  
TC-F  
item no.: 213-920-033



replacement lamp 36 W  
TC-L  
item no.: 213-920-010