

LEDSPOTS



CONVENIENT LED TECHNOLOGY

As the perfect replacement for halogen lamps, these LED modules are ideal for use in furniture, false ceilings as well as cooker hoods.

The package is rounded off by a matching LED driver housed in a compact casing plus a set of cables with pre-assembled plugs for connecting up to five LED modules.

Complete LEDSpots with frame

- Replacement for Halogen lamps 20–35 W
- Flat LED spot with heat sink and frame based on COB or SMD modules
- For built-in into ceilings or metal sheets

Typical applications for LEDSpots

- Replacement of residential spots with G4 lamps
- Marking paths, stairs, etc.
- Furniture lighting (IP54 version for humid rooms)
- Retail lighting



LEDSpot IPLine

Complete LEDSpot IP54 equipped with optics, heat sink, leads and metal frame

Technical notes

Metal frame, round

For cut-out: Ø 56 mm

LEDSpot with one LED and with thermoplastic heat sink

Reflector with clear glass (opaque glass on request)

Beam angle: 30° or 50° (LCH-022), 40° (LCH-023)

Colour accuracy initially: 3 SDCM

CRI: 80

Leads: Cu tinned, stranded conductors AWG22,

PVC-insulation, length: 250 mm

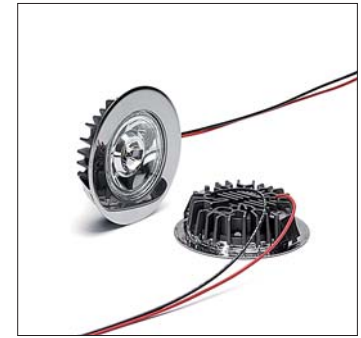
Use of external LED constant-current drivers

Snap-in clips for easy installation

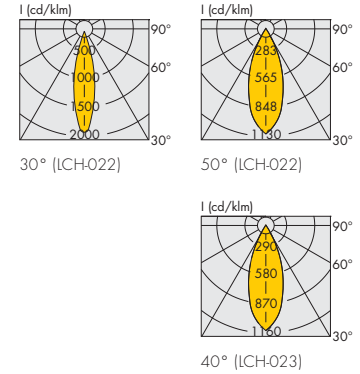
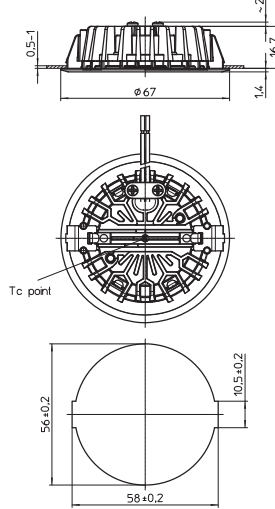
Degree of protection: IP54

Weight: 50 g

Packaging unit: 45 pcs.



LCH-022 / LCH-023



Type	Description	LEDSpot version	Colour	Correlated colour temperature K	Luminous flux (lm) and typical voltage (U _{typ.}) and power consumption (P _{el})*						Light intensity at max. current Candela		Beam angle °	Energy efficiency at max. current
					350 mA		500 mA		700 mA		30°	50°		
					min.	typ.	min.	typ.	min.	typ.				
LEDSpot IPLine (LCH-022)					P _{el} = 1.02 W U _{typ.} = 2.9 V		P _{el} = 1.5 W U _{typ.} = 3 V		P _{el} = 2.16 W U _{typ.} = 3.09 V					
LCH-022	IPLine 219 3000K	A	warm white	2870...3200	90	100	130	140	170	180	320	190	30/50	A++
LCH-022	IPLine 219 4500K	B	neutral white	4250...4750	100	110	140	150	180	190	390	210	30/50	A++
LEDSpot IPLine COB (LCH-023)					P _{el} = 3.5 W U _{typ.} = 10 V								40°	
LCH-023	IPLine COB 3000K	C	warm white	2920...3070	250	285	–	–	–	–	330	–	40	A+
LCH-023	IPLine COB 4200K	D	neutral white	3850...4650	263	300	–	–	–	–	380	–	40	A++

Emission data at t_i = 85 °C (LCH-022) / 25 °C (LCH-023) | Further colour temperatures on request

* Production tolerance of luminous flux, voltage and power consumption: ±7 % (LCH-022) / ±5 % (LCH-023)

Frame colour	LCH-022				LCH-023			
	Ref. No.	Ref. No.	Ref. No.	Ref. No.	Ref. No.	Ref. No.	Ref. No.	Ref. No.
silver	A (warm white)	561772	B (neutral white)	561774	C (warm white)	552089	D (neutral white)	552091
	30°		50°		40°			
white	561770	561773	561775	561777	552088	552090		

Silver brushed or further colours on request

The values contained in this data sheet can change due to technical innovations. Any such changes will be made without separate notification.

LEDSpot SmartLine COB

Complete LEDSpot equipped with optics, heat sink, leads and metal frame

Technical notes

Metal frame, round or square

For cut-out: Ø 56 mm

LEDSpot with one LED and with an aluminium heat sink

Beam angle: 40°

Colour accuracy initially: 3 SDCM

CRI: 80

Leads: Cu tinned, stranded conductors AWG22,

PVC-insulation, length: 250 mm

Use of external LED constant-current drivers

Snap-in clips for easy installation

for luminaire sheets (type LCH-017 and -020)

for ceilings (type LCH-019 and -021)

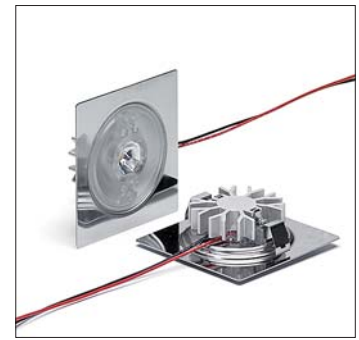
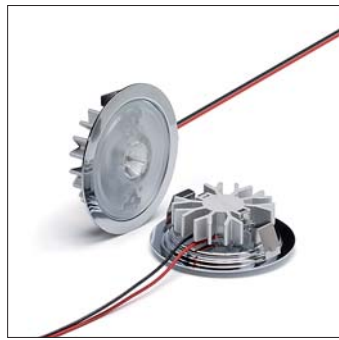
Degree of protection: IP40

Weight: 60 g

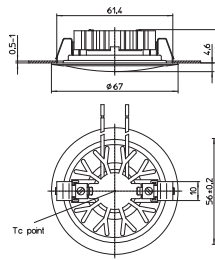
Packaging unit:

45 pcs. (type LCH-017 and -020)

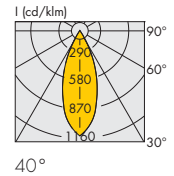
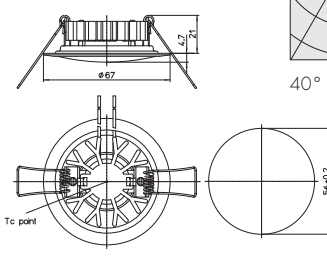
40 pcs. (type LCH-019 and -021)



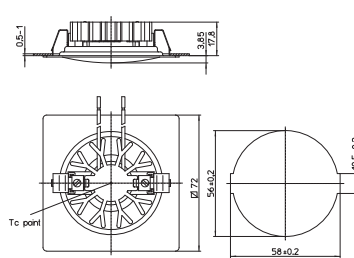
LCH-017



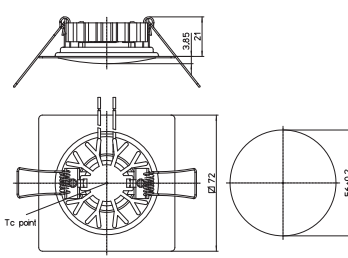
LCH-019



LCH-020



LCH-021



Type	Description	LEDSpot Version		Colour	Correlated colour temperature K	Luminous flux (lm) and typical voltage (U _{typ.}) and power consumption (P _{el})*		Light intensity at max. current Candela	Frame shape		Energy efficiency at max. current
		for luminaire sheets	ceilings			min.	typ.		round	square	

P_{el} = 3.5 W, U_{typ.} = 10 V

All types	Smart COB 3000K 40°	A	C	warm white	2920...3070	250	285	330	round	square	A+
All types	Smart COB 4200K 40°	B	D	neutral white	3850...4650	263	300	380	round	square	A+

Emission data at t_c = 25 °C | *Production tolerance of luminous flux, voltage and power consumption: ±5% | Further colour temperatures on request

Frame colour	For luminaire sheets (LCH-017 and LCH-020)				For ceilings (LCH-019 and LCH-021)			
	Ref. No. A (warm white)		Ref. No. B (neutral white)		Ref. No. C (warm white)		Ref. No. D (neutral white)	
	round	square	round	square	round	square	round	square
silver	548912	548928	548916	548932	548920	548936	548924	548940
silver mat	548913	—	548917	—	548921	—	548925	—
white	548915	548931	548919	548935	548923	548939	548927	548943

Silver brushed or further colours on request

The values contained in this data sheet can change due to technical innovations. Any such changes will be made without separate notification.

LEDSpot SmartLine

Complete LEDSpot equipped with optics, heat sink, leads and metal frame

Technical notes

Metal frame, round or square

For cut-out: Ø 56 mm

LEDSpot with one LED and with thermoplastic heat sink

Optics beam angle: 50°

Colour accuracy initially: 3 SDCM

CRI: 80

Leads: Cu tinned, stranded conductors AWG22,

PVC-insulation, length: 250 mm

Use of external LED constant-current drivers

Snap-in clips for easy installation

for luminaire sheets (type LCH-002 and -008)

for ceilings (type LCH-004 and -009)

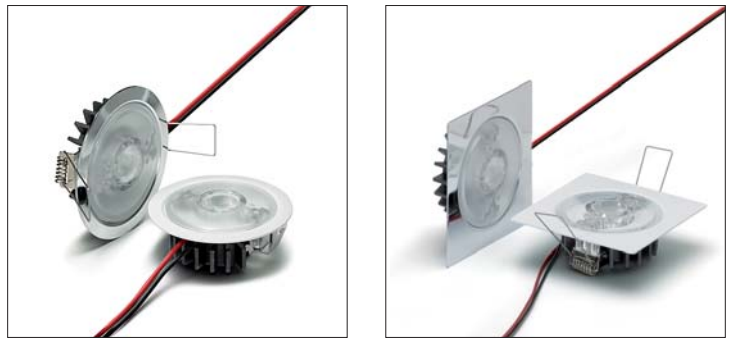
Degree of protection: IP40

Weight: 55 g

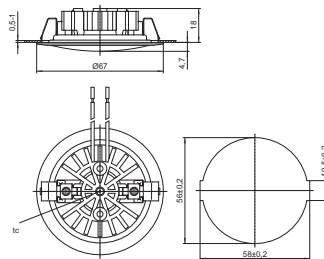
Packaging unit:

45 pcs. (Type LCH-002 and -008)

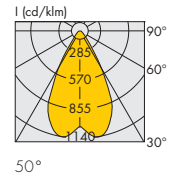
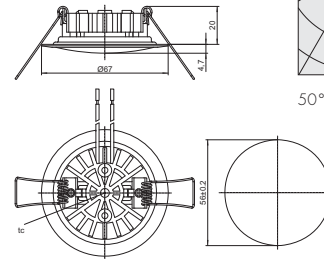
40 pcs. (Type LCH-004 and -009)



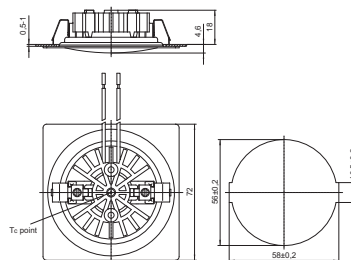
LCH-002



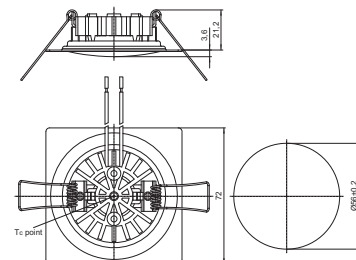
LCH-004



LCH-008



LCH-009



Type	Description	LEDSpot version		Colour	Correlated colour temperature K	Luminous flux (lm) and typical voltage (U _{typ.}) and power consumption (P _{el})*						Light intensity at max. current Candela	Frame shape		Energy efficiency at max. current
		for luminaire sheets	ceilings			min.	typ.	min.	typ.	min.	typ.		round	square	
						P _{el} = 1.02 W U _{typ.} = 2.9 V		P _{el} = 1.5 W U _{typ.} = 3 V		P _{el} = 2.16 W U _{typ.} = 3.09 V					
All	Smart COB 3000K 40°	A	C	warm white	2870...3200	90	100	130	140	170	180	230	round	square	A++
All	Smart COB 4200K 40°	B	D	neutral white	4250...4750	100	110	140	150	180	190	270	round	square	A++

Emission data at t_i = 85 °C | * Production tolerance of luminous flux, voltage and power consumption: ±7% | Further colour temperatures on request

Frame colour	For luminaire sheets (LCH-002 and LCH-008)				For ceilings (LCH-004 and LCH-009)			
	Ref. No. A (warm white)		Ref. No. B (neutral white)		Ref. No. C (warm white)		Ref. No. D (neutral white)	
	round	square	round	square	round	square	round	square
silver	561778	561781	561783	561786	561788	561791	561794	561797
silver mat	561779	—	561809	—	561789	—	561795	—
white	561780	561782	561785	561787	561790	561792	561796	561798

Silver brushed or further colours on request

The values contained in this data sheet can change due to technical innovations. Any such changes will be made without separate notification.

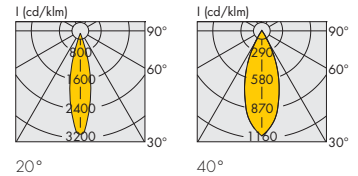
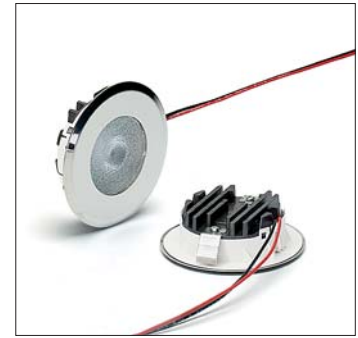
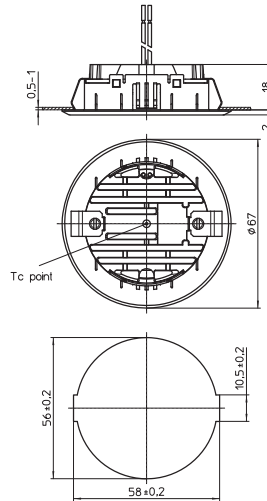
LEDSpot StartLine

Complete LEDSpot equipped with optics, heat sink, leads and frame

Technical notes

- Steel frame: round
- For cut-out: Ø 56 mm
- LEDSpot with one LED and with thermoplastic heat sink
- Optics beam angle: 20° or 40°
- Colour accuracy initially: 3 SDCM
- CRI: 80
- Leads: Cu tinned, stranded conductors 0.5 mm², PVC-insulation, length: 250 mm
- Use of external LED constant-current drivers
- Snap-in clips for easy installation
- Degree of protection: IP20
- Weight: 40 g
- Packaging unit: 45 pcs.

LCH-016



Type	Description	LEDSpot version	Colour	Correlated colour temperature K	Luminous flux (lm) and typical voltage (U _{typ.}) and power consumption (P _{el})*						Light intensity at max. current Candela		Energy efficiency at max. current
					350 mA		500 mA		700 mA		20°	40°	
					min.	typ.	min.	typ.	min.	typ.			
					P _{el} = 1.02 W		P _{el} = 1.5 W		P _{el} = 2.16 W				
					U _{typ.} = 2.9 V		U _{typ.} = 3 V		U _{typ.} = 3.09 V				
LCH-016	Start 219 3000K	A	warm white	3000	90	100	130	140	170	180	550	190	A++
LCH-016	Start 219 4500K	B	neutral white	4500	100	110	140	150	180	190	580	250	A++

Emission data at $t_j = 85^\circ\text{C}$ | * Production tolerance of luminous flux, voltage and power consumption: $\pm 7\%$ | Further colour temperatures on request

Frame colour	Ref. No. A (warm white)		Ref. No. B (neutral white)	
	20°	40°	20°	40°
silver	561799	561801	561803	561805
white	561800	561802	561804	561807

Silver brushed or further colours on request

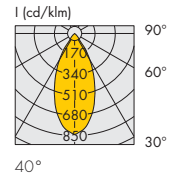
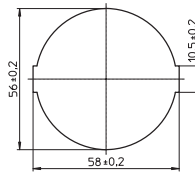
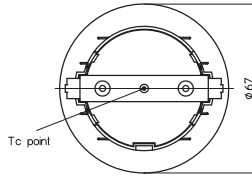
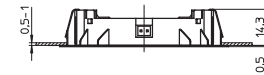
The values contained in this data sheet can change due to technical innovations. Any such changes will be made without separate notification.

LEDSpot FlatLine

Complete LEDSpot equipped with optics, leads and frame

Technical notes

Metal frame: silver, round
 For cut-out: Ø 56 mm
 LEDSpot with 5 LEDs (LCH027) or 6 LEDs (LCH028)
 Beam angle: 40°
 With connector
 Snap-in clips for easy installation
 Degree of protection: IP20 (Front part: IP67)
 CRI: 80
 Weight: 40
 Packaging unit: 45 pcs.



Constant current

Type	Description	Ref. No.	Colour	Correlated colour temperature K	Luminous flux (lm) and typical voltage (U _{typ.}) and power consumption (P _{el})*			Light intensity at max. current Candela 40°	Energy efficiency at max. current
					350 mA typ.	500 mA typ.	700 mA typ.		
					P _{el} = 1 W U _{typ.} = 2.88 V	P _{el} = 1.5 W U _{typ.} = 3 V	P _{el} = 2.2 W U _{typ.} = 3.1 V		
LCH-027 – 5 LEDs									
LCH027	Flat 757D 3000K bin min P9	561580	warm white	2870...3200	101	135	190	160	A++
LCH027	Flat 757D 4000K bin min P9	561582	neutral white	3850...4250	105	140	195	220	A++

Emission data at $t_j = 85\text{ °C}$ | * Production tolerance of luminous flux, voltage and power consumption: $\pm 7\%$ | Further colour temperatures on request

Constant voltage 12 V

Type	Description	Ref. No.	Colour	Correlated colour temperature K	Typ luminous flux* lm	Light intensity Candela	Max. power consumption W	Energy efficiency
LCH-028 – 6 LEDs								
LCH028	Flat 2835 3000K bin min P9	561588	warm white	2870...3200	100	90	1.7	A+
LCH028	Flat 2835 4000K bin min P9	561590	neutral white	3850...4250	100	100	1.7	A+

Emission data at $t_j = 85\text{ °C}$ | * Production tolerance of luminous flux: $\pm 7\%$ | Further colour temperatures on request

The values contained in this data sheet can change due to technical innovations. Any such changes will be made without separate notification.

LEDSpot DisLine

Complete LEDSpot equipped with optics, heat sink, leads and metal frame

Technical notes

Metal frame, round

For cut-out: Ø 56 mm

LEDSpot with one LED and with thermoplastic heat sink

Reflector with clear glass (opaque glass on request)

Beam angle: 30° or 50°

Leads: Cu tinned, stranded conductors AWG22,

PVC-insulation, length: 250 mm

Use of external LED constant-current drivers

Snap-in clips for easy installation

for luminaires sheets (type LCH-006)

for ceilings (type LCH-007)

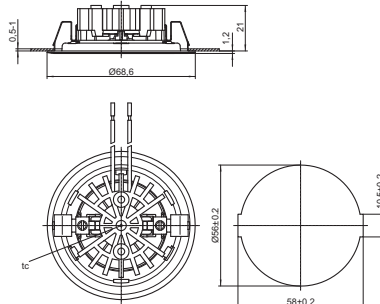
Degree of protection: IP40

Weight: 50 g

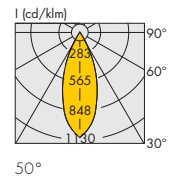
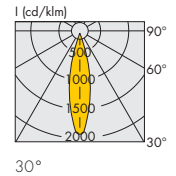
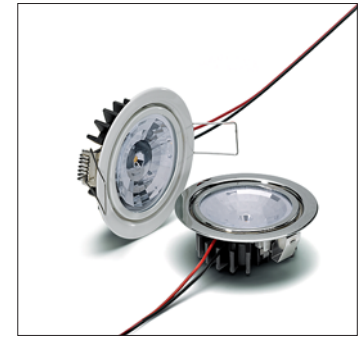
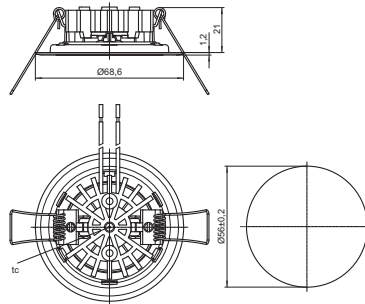
Packaging unit: 45 pcs. (type LCH-006)

40 pcs. (type LCH-007)

LCH-006



LCH-007



Type	Description	LEDSpot version		Colour	Correlated colour temperature K	Luminous flux (lm) and typical voltage (U _{typ.}) and power consumption (P _{el})*						Light intensity at max. current Candela		Energy efficiency at max. current
		for luminaire sheet	ceilings			350 mA min.	500 mA typ.	700 mA min.	typ.	U _{typ.}	P _{el}	30°	50°	
All types	Disc 219 3000K	A	C	warm white	3000	90	100	130	140	170	180	320	190	A++
All types	Disc 219 4500K	B	D	neutral white	4500	100	110	140	150	180	190	390	210	A++

Emission data at $t_1 = 85^\circ\text{C}$ | *Production tolerance of luminous flux, voltage and power consumption: $\pm 7\%$ | Further colour temperatures on request

Frame colour	For luminaire sheets (LCH-006)				For ceilings (LCH-007)			
	Ref. No. A (warm white)		Ref. No. B (neutral white)		Ref. No. C (warm white)		Ref. No. D (neutral white)	
	30°	50°	30°	50°	30°	50°	30°	50°
silver	561836	561844	561846	561849	561851	561854	561861	561863
white	561842	561845	561848	561850	561853	561855	561862	561864

Silver brushed or further colours on request

The values contained in this data sheet can change due to technical innovations. Any such changes will be made without separate notification.

LEDSpot EffectLine

Complete LEDSpot equipped with optics, heat sink, leads and metal frame

Technical notes

Metal frame, round or square

For cut-out: Ø 37 mm

LEDSpot with one LED and with thermoplastic heat sink

Beam angle: 8°, 16°, 26° or 45°

Leads: Cu tinned, stranded conductors AWG22,

PVC-insulation, length: 250 mm

Use of external LED constant-current drivers

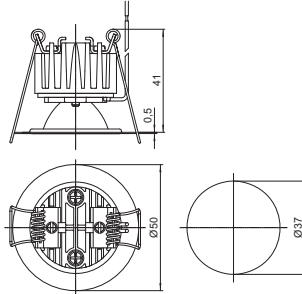
Snap-in clips for easy installation

Degree of protection: IP20

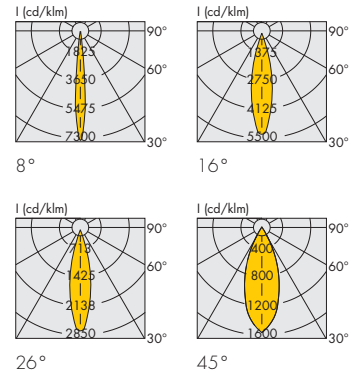
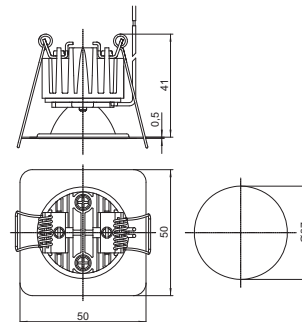
Weight: 40 g

Packaging unit: 45 pcs.

LCH-010



LCH-011



Type	Description	LEDSpot version	Colour	Correlated colour temperature	Luminous flux (lm) and typical voltage (U _{typ.}) and power consumption (P _{el})*						Light intensity at max. current				Energy efficiency at max. current
					350 mA		500 mA		700 mA		Candela		8°	16°	
					min.	typ.	min.	typ.	min.	typ.					
					P _{el} = 1.02 W		P _{el} = 1.5 W		P _{el} = 2.16 W						
					U _{typ.} = 2.9 V		U _{typ.} = 3 V		U _{typ.} = 3.09 V						
All types	Effect 219 3000K	A	warm white	3000	90	100	130	140	170	180	1200	450	500	300	A++
All types	Effect 219 4500K	B	neutral white	4500	100	110	140	150	180	190	1250	1100	560	330	A++

Emission data at $t_i = 85^\circ\text{C}$ | *Production tolerance of luminous flux, voltage and power consumption: $\pm 7\%$

Frame colour	Ref. No. A (warm white)								Ref. No. B (neutral white)							
	round				square				round				square			
	8°	16°	26°	45°	8°	16°	26°	45°	8°	16°	26°	45°	8°	16°	26°	45°
silver	566143	561808	566146	566148	566150	566152	566154	566156	566158	566160	566162	566164	566166	566168	561831	561834
white	566144	566145	566147	566149	566151	566153	566155	566157	566159	566161	566163	566165	566167	566169	561833	561835

Silver brushed or further colours on request

The values contained in this data sheet can change due to technical innovations. Any such changes will be made without separate notification.

Surface Kit with Mounted LEDSpot

Metal frame to use IPLine, SmartLine, StartLine or FlatLine as surface mounting spots
 Two single pole terminals for electrical connection inside the kit (frame + spot)
 Fixation by self tapping screws
 Packaging unit: 90 pcs.

Ref. No.: 554845 Frame colour: white

Ref. No.: 554843 Frame colour: silver

Surface Kit with LEDSpot StartLine

Colour temperature: 3000 K

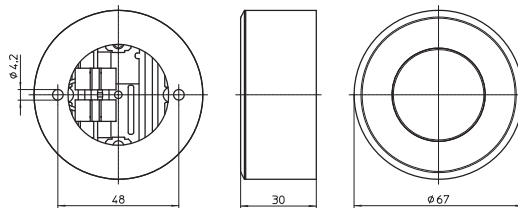
Beam angle: 40°

Packaging unit: 1 pcs.

Type: StartLine SFK LCH016

Ref. No.: 559621 Frame colour: white

Ref. No.: 557157 Frame colour: silver



Surface Kit with LEDSpot SmartLine

Colour temperature: 3000 K

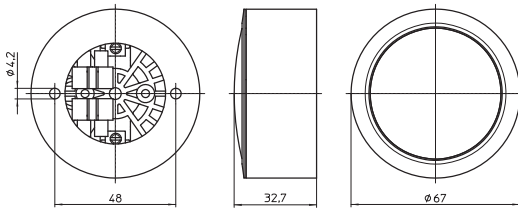
Beam angle: 50°

Packaging unit: 1 pcs.

Type: SmartLine SFK LCH002

Ref. No.: 557158 Frame colour: white

Ref. No.: 559622 Frame colour: silver



Surface Kit with LEDSpot IPLine

Colour temperature: 4500 K

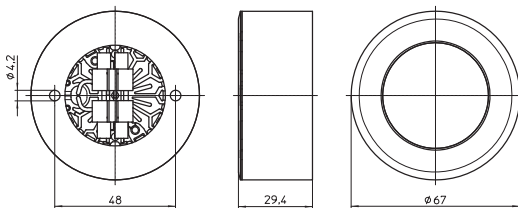
Beam angle: 30°

Packaging unit: 1 pcs.

Type: IPLine SFK LCH022

Ref. No.: 559624 Frame colour: white

Ref. No.: 559623 Frame colour: silver



Surface Kit with LEDSpot FlatLine

Colour temperature: 3000 K

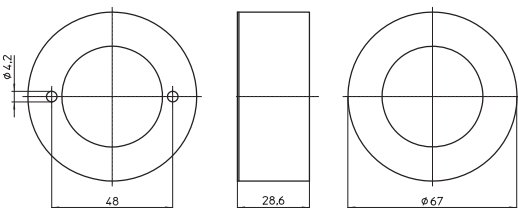
Beam angle: 40°

Packaging unit: 1 pcs.

Type: FlatLine SFK LCH027 (700 mA)

Ref. No.: 561870 Frame colour: white

Ref. No.: 561871 Frame colour: silver



The values contained in this data sheet can change due to technical innovations. Any such changes will be made without separate notification.

Surface Kit with Mounted LEDSpot

Description	Ref. No.		Colour	Correlated colour temp. [K]	Luminous flux* (lm)			Light intensity at max. current (Cd)	Beam angle °	Energy efficiency at max. current
	Frame colour silver	white			350 mA typ.	500 mA typ.	700 mA typ.			
StartLine SFK LCH016					$P_{el} = 1.02 \text{ W}$ $U_{typ.} = 2.9 \text{ V}$	$P_{el} = 1.5 \text{ W}$ $U_{typ.} = 3 \text{ V}$	$P_{el} = 2.16 \text{ W}$ $U_{typ.} = 3.09 \text{ V}$			
StartLine 219 3000K Bin	557157	559621	warm white	2870...3200	100	140	180	190	40	A++
SmartLine SFK LCH002										
SmartLine 219 3000K Bin	559622	557158	warm white	2870...3200	100	140	180	230	50	A++
IPLine SFK LCH002										
IPLine 219 4500K Bin	559623	559624	neutral white	4250...4750	110	150	190	390	30	A++
FlatLine SFK LCH027					$P_{el} = 1 \text{ W}$ $U_{typ.} = 2.88 \text{ V}$	$P_{el} = 1.5 \text{ W}$ $U_{typ.} = 3 \text{ V}$	$P_{el} = 2.2 \text{ W}$ $U_{typ.} = 3.1 \text{ V}$			
FlatLine 757D 4000K bin min P9	561871	561870	neutral white	3850...4250	105	140	195	220	40	A++

Emission data at $t_i = 85 \text{ °C}$ | * Measurement tolerance of luminous flux: $\pm 7\%$

LED Driver

You will find more information about our LED drivers on our website: www.vossloh-schwabe.com

Constant current

Capacity range W	Output current DC mA	Output voltage DC V	Ref. No.	Version	Current setting	Dimming	Max. service life time (hrs.)	Dimensions: mm (LxWxH)
700 mA								
5.6	700	2.8-8	186348	EasyLine	–	–	50,000	81.6x42.5x23
17	700	2-25	186426	ComfortLine	–	–	100,000	128x37x28
350 mA								
7	350	8.4-20	186342	EasyLine	–	–	50,000	81.6x42.5x23
8	350	2-24	186180	ComfortLine	–	–	100,000	65x30.7x21.5
9	350	2-25	186519	ComfortLine	–	–	100,000	65x30.7x21.5
11	350	2-32	186424	ComfortLine	–	–	100,000	128x37x28
12,6	350	8.4-36	186341	EasyLine	–	–	50,000	122.8x45x19

Please ensure you choose the correct LED driver for the module in question and that the respective output parameters (current, voltage, wattage) are correct.

Constant voltage 12 V

Capacity range W	Mains voltage 50-60 Hz V $\pm 10\%$	Output current A	Ref. No.	Version	Current setting	Dimming	Max. service life time hrs.	Dimensions LxWxH mm
6	220-240	0.0-0.5	186412	EasyLine	–	–	50,000	81.6x42.5x23
12	220-240	0.0-1.0	186204	ComfortLine	–	–	100,000	103,5x36x22

Please ensure you choose the correct LED driver for the module in question and that the respective output parameters (current, voltage, wattage) are correct.

The values contained in this data sheet can change due to technical innovations. Any such changes will be made without separate notification.