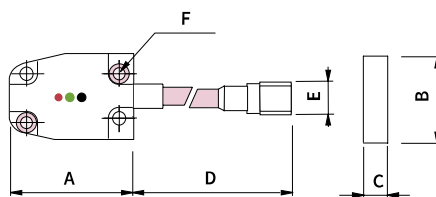
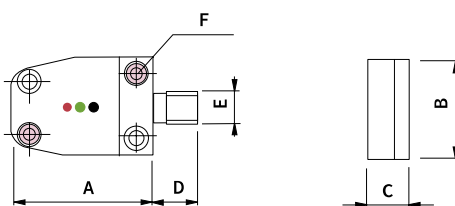


## Built-in Sensor

SI-...

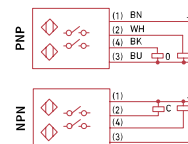


SI-20, SI-20N



SI-32, SI-32N  
SI-40, SI-40N  
SI-50, SI-50N

### Electrical connections



## Description

Built-in sensor for fastening clamps. The sensor sends a signal when the arm of the fastening clamp reaches the stroke-end position.

TYPE	A	B	C	D	E	F
SI-20, SI-20N	42,2	26	8	110	M12X1	M4
SI-32, SI-32N	57,7	41	16	10	M12X1	M4
SI-40, SI-40N	73	48	16	10	M12X1	M4
SI-50, SI-50N	73	48	16	10	M12X1	M4

TYPE	WEIGHT (kg)
SI-20, SI-20N	0,02
SI-32, SI-32N	0,02
SI-40, SI-40N	0,03
SI-50, SI-50N	0,03

## Technical specifications

### Material:

PA6 IP65

Cover and bolts included

Negative polarity (NPN) is indicated with an "N" in the reference, for example: SI-50N

It is recommended to use a M12 connector, ref. CS-001 or CS-003-200, with this sensor

## Application examples

